

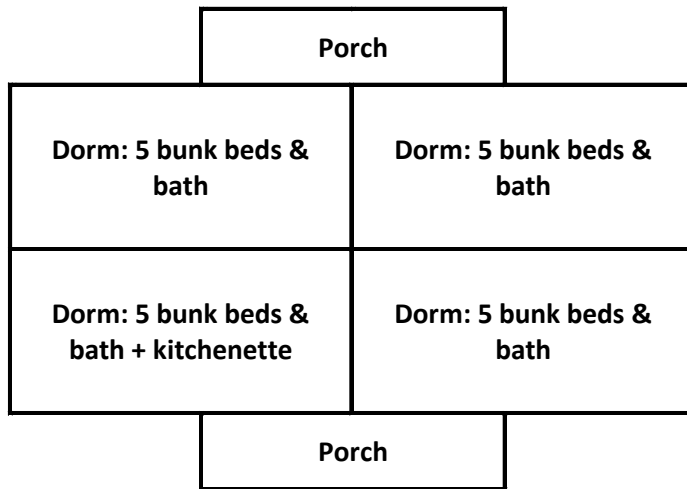
# Crystal Conference Center Lodging Facilities Footprints

Crystal Lake, Frankfort Michigan – Christian Church Michigan Region

November 6, 2017

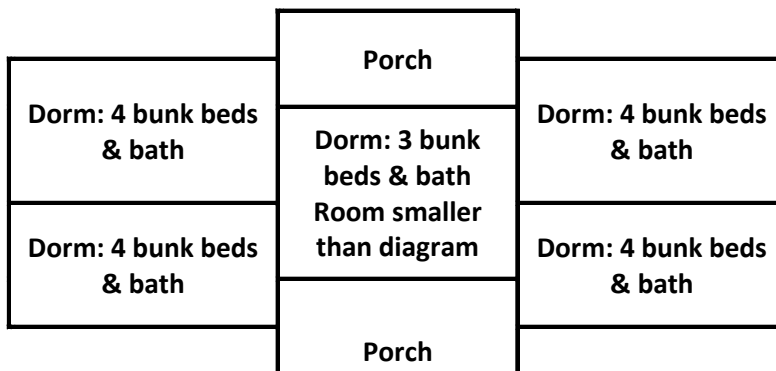
## Beeches Dormitory - 4 units with baths, 2 porches, 1 kitchenette

- Total Building: 20 Bunk Beds. Max Occupancy = 40
- Building 60 ft length x 34 ft wide; shared porch 28 ft wide
- Entrances to dorm units from porches



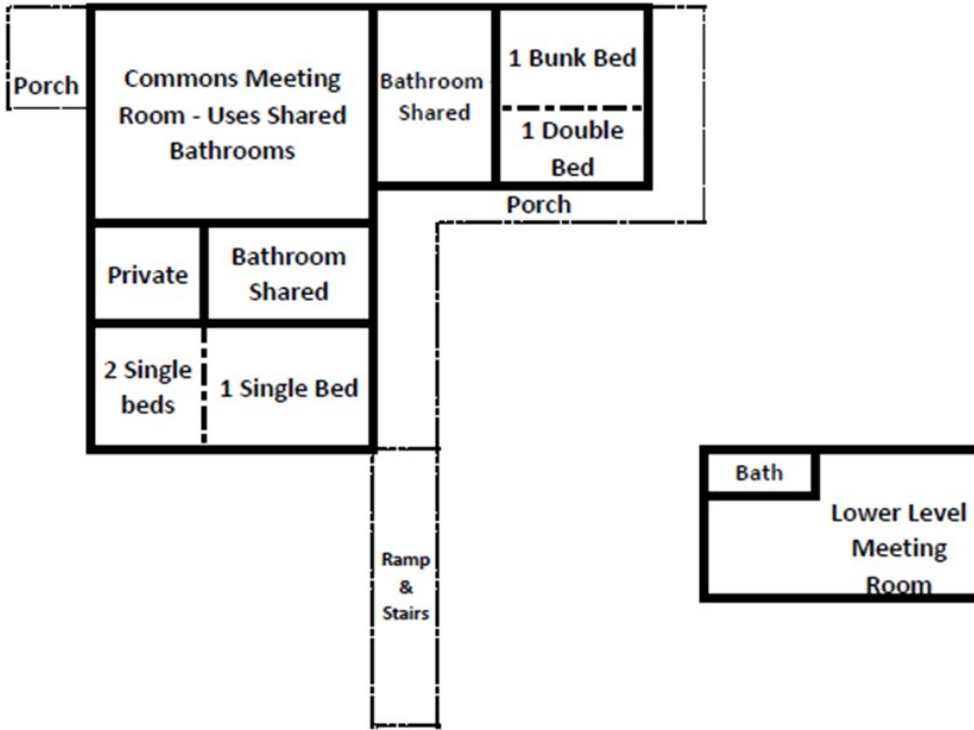
## Birches & Pines Dormitories - 5 units with baths, 2 porches

- Each Building: 19 Bunk Beds. Max Occupancy = 38
- Building 66 ft length x 30 ft wide; shared porch 28 ft wide
- Entrances to dorm units from porches



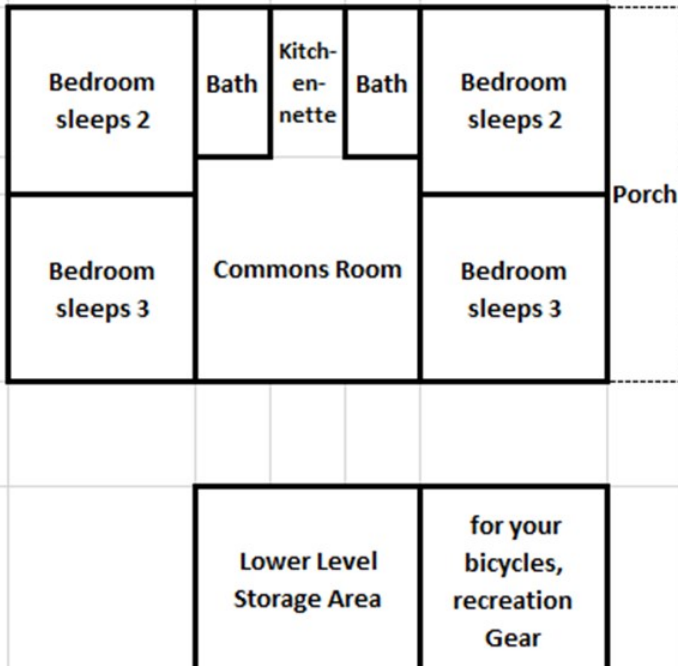
### Oaks Lodge - 2 Bedroom units, 2 shared bathrooms, 1 meeting room

- Total Building: 6
- Room One: sleeps 3 - 1 bunk bed; Room Two: sleeps 3
- Entrances to all rooms from porch - includes stairs and ramp
- Oaks also has meeting room and bathroom on lower level



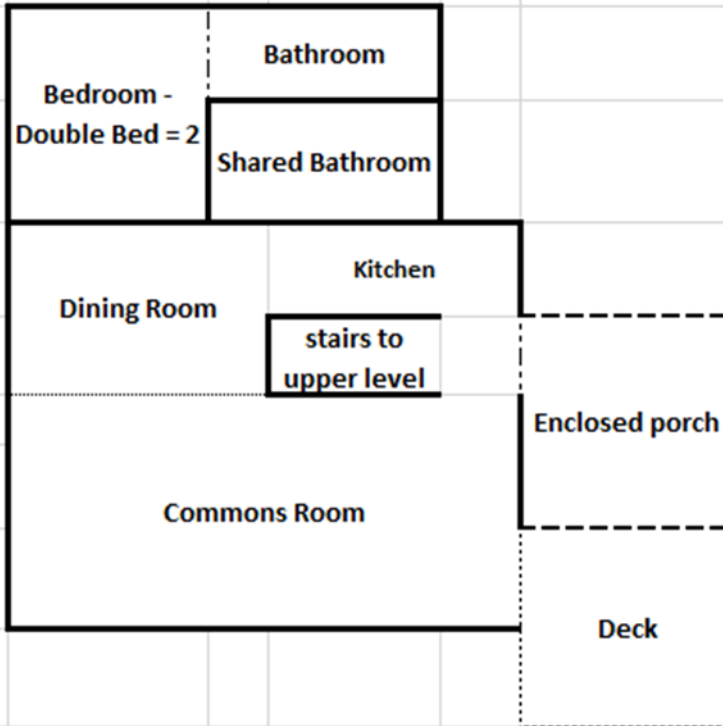
### Cedar Lodge - 4 Bedroom units, 2 Bathrooms, Commons room, Kitchenette

- Total Building: 2 rooms - double bed & bunk; 2 rooms 2 singles. Max Occupancy = 10
- Has own septic system & water supply
- Electric heat for cool weather

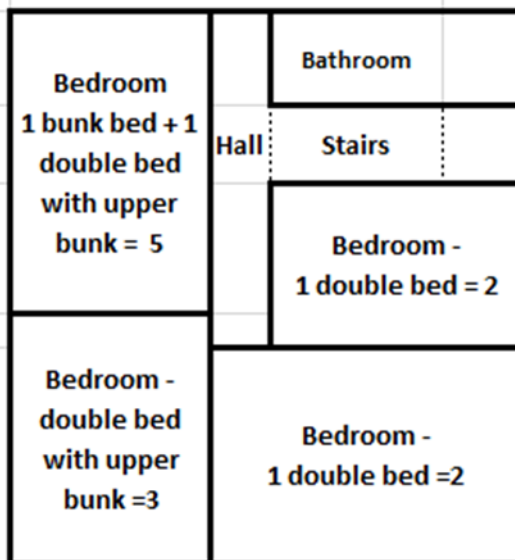


### Mission House:

- 5 Bedrooms, 3 Full Baths, Kitchen, Dining & Common rooms; Max Occupancy = 14
- Enclosed porch and outside deck; tennis court available via reservation
- Handicap accessible; bedding provided
- Beach access



### Upstairs Rooms



**Pioneer Lodge:**

- 1 Queen Bed; 5 small bunk beds; bath & shower; kitchenette; Max Occupancy = 7
- Front porch and deck;
- Handicap accessible; bedding provided

